

# Auto Test

---

# NetBrake<sup>®</sup>





DECLARATION OF CONFORMITY

We, Auto Test Products Pty Ltd. declare under our sole responsibility that the product NetBrake is in conformity with the provisions of the following Council Directive: 1999/5/EC.

A copy of the Declaration of Conformity is available from <http://www.autotest.net.au>

© AutoTest Products Pty Ltd (AutoTest) [2024].

Copyright in the drawings, information and data recorded in this document (the information) is the property of AutoTest Products. This document and the information are solely for the use of the authorised recipient and this document may not be used, copied, or reproduced in whole or part for any purpose other than that for which it was supplied by AutoTest Products. AutoTest Products makes no representation, undertakes no duty, and accepts no responsibility to any third party who may use or rely upon this document or the information.

Under no circumstances shall AutoTest Products be responsible for any loss of data or income or any special, incidental, consequential or direct damages howsoever caused. The contents of this document are provided "as is". Except as required by applicable law, no warranties of any kind, either express or implied, including, but not limited to, the implied warranties of merchantability and fitness for a particular purpose, are made in relation to the accuracy, reliability or contents of this document. AutoTest Products reserves the right to revise this document or withdraw it at any time without prior notice.

# Table of Contents

## *AutoTest NetBrake*

<b>1. GETTING STARTED .....</b>	<b>2</b>
<b>2. LICENSING .....</b>	<b>2</b>
<b>3. ADDING TEST DATA TO THE NETBRAKE DATABASE .....</b>	<b>3</b>
3.1 Downloading tests from your AutoStop Heavy brake tester .....	3
3.2 Importing tests previously downloaded using the Maxi/Heavy Datalogger application .....	4
<b>4. ENTERING DETAILS .....</b>	<b>5</b>
4.1 Vehicles .....	5
4.2 Companies .....	6
4.3 Sites .....	6
4.4 Brake test calculations .....	7
4.5 Custom brake test calculations .....	8
<b>5. REPORTING .....</b>	<b>10</b>
5.1 Test reports .....	10
5.2 Vehicle reports .....	10
5.3 Company and site reports .....	10
5.4 Filtered fleet reports .....	10
<b>6. TROUBLESHOOTING AND CONTACT DETAILS.....</b>	<b>11</b>

---

## 1. Getting started

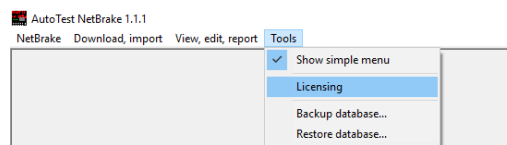
Thank you for purchasing the AutoTest **NetBrake** software application. This software has been developed to assist the mining and heavy vehicle industries in Australia in managing brake test records and brake test standards and calculations for their fleets.

To install **NetBrake**, click on the download link from the AutoTest website, and run it. Once installed, you may start the application by clicking on the desktop icon.

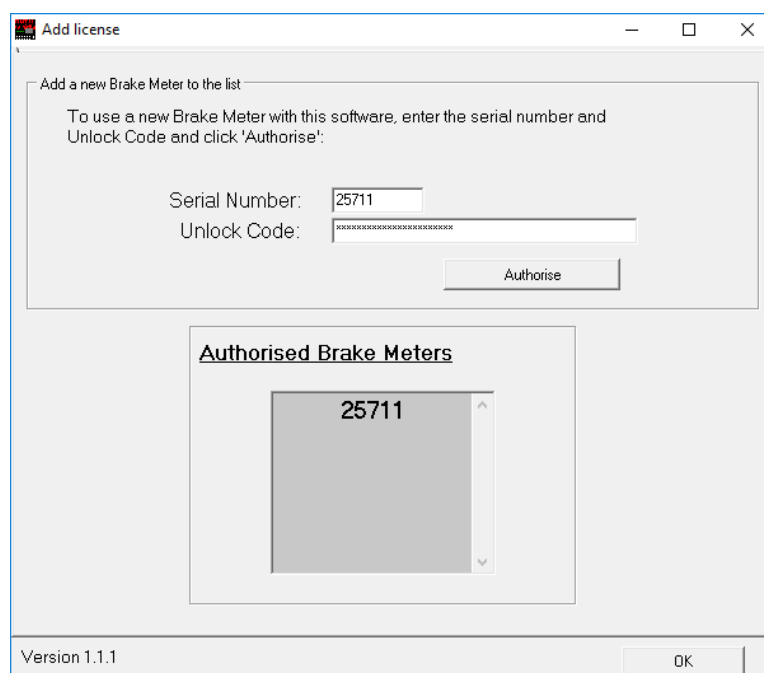
## 2. Licensing

**NetBrake** requires an Unlock Code for each AutoStop brake tester used. Please contact AutoTest Sales to request Unlock Codes for your AutoStop brake testers (see section 6).

To license an AutoStop brake tester, choose Licensing from the Tools menu:



Enter the brake testers' serial number and Unlock Code, and then press the Authorise button. The serial number of the brake tester will appear in the "Authorised Brake Meters" list:



---

Once done, you will be able to download and import tests from this brake tester.

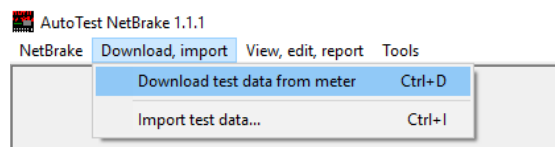
### 3. Adding test data to the NetBrake database

#### 3.1 Downloading tests from your AutoStop Heavy brake tester

Connect your AutoStop brake tester to your computer via the supplied serial cable or USB cable, or connect your Bluetooth or UZBee dongle to a free USB port on your computer.

If the brake tester is either connected via USB cable or Bluetooth then switch ON the brake meter now. Otherwise, do not switch ON the brake tester yet.

Click on “Download test data from meter” from the “Download, import” menu:



Select the communication port using which your computer is connected to the brake meter. A COM port is either a physical serial port in your computer (usually taking the smallest port numbers COM1 and/or COM2), or a virtual serial port generated by the USB drivers, or Bluetooth Serial Interface, or UZBee dongle. The COM port can be checked in Windows Device Management. Refer to the UZBee documentation for more details.

Enter the serial number of the brake tester you are about to download from.

If the brake tester is connected through RS232 serial cable or UZBee dongle, when prompted to do so, switch ON the brake tester. But if the brake meter is connected through USB or Bluetooth interface, keep the brake tester ON and press ‘U’ from the keypad when the LCD displays “Ready>” and the download will commence.

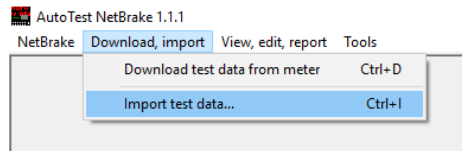
If you are downloading tests for vehicles that do not exist in the database yet, you will be prompted to enter vehicle details once the download is complete (see section 4.1).

---

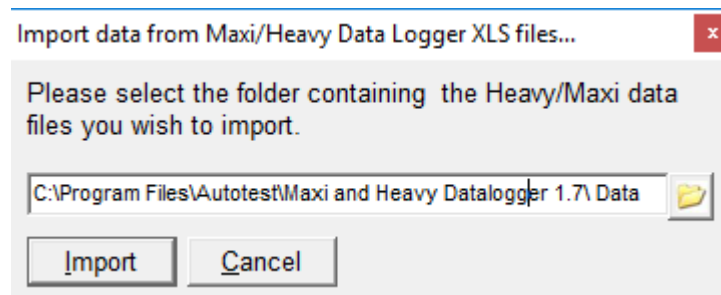
## 3.2 Importing tests previously downloaded using the Maxi/Heavy Datalogger application

If you have been using the Maxi/Heavy DataLogger software to retrieve tests for your AutoStop brake testers, you will be able to import them into the **NetBrake** database.

Click on “Import test data...” from the “Download, import” menu:



**NetBrake** will search for an existing installation of Maxi/Heavy DataLogger and display the path to the Data folder. If it has not found the path, or you would like to import data from another path, click on the folder icon to select a different path. Press the “Import” button to begin adding tests to the database:



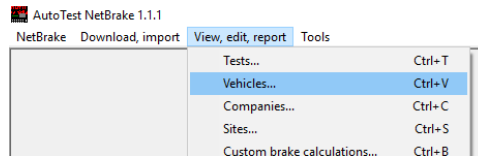
If you are importing tests for vehicles that do not exist in the database yet, you will be prompted to enter vehicle details once the import is complete (see section 4a).

---

## 4. Entering details

### 4.1 Vehicles

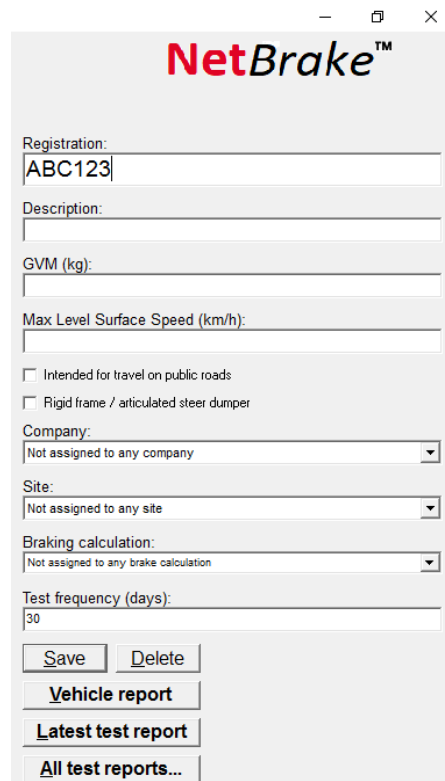
Some data must be entered for each vehicle in the database, before the fleet and brake pass/fail reporting can be used. Open the Vehicle Edit window by clicking “Vehicles” from the “View, edit, report” menu:



Choose a company, site, and braking calculation for this vehicle. Most brake calculations require the Gross Vehicle Mass to be entered; the AS2958.1 brake test standard also requires Max Level Surface Speed to be entered, whether the vehicle is intended for travel on public roads, and whether the vehicle is a rigid frame / articulated steer dumper.

If you wish the vehicle and fleet reports to advise of the date when the next brake test is due, enter a test frequency in days.

Once all details have been entered, press the “Save” button to commit changes to the database:

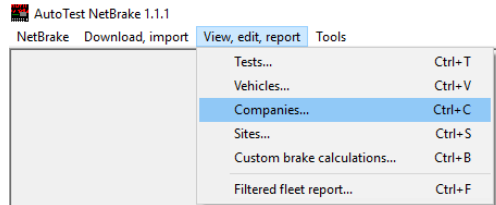
A screenshot of the NetBrake vehicle edit form. The form is titled 'NetBrake™' and contains the following fields and options:

- Registration: ABC123
- Description: (empty)
- GVM (kg): (empty)
- Max Level Surface Speed (km/h): (empty)
- Intended for travel on public roads
- Rigid frame / articulated steer dumper
- Company: (dropdown menu, 'Not assigned to any company' selected)
- Site: (dropdown menu, 'Not assigned to any site' selected)
- Braking calculation: (dropdown menu, 'Not assigned to any brake calculation' selected)
- Test frequency (days): 30
- Buttons: Save, Delete, Vehicle report, Latest test report, All test reports...

---

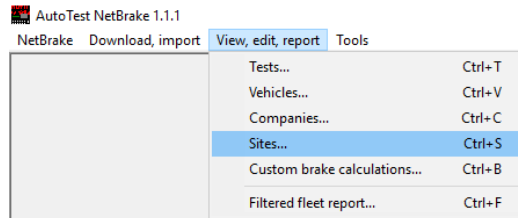
## 4.2 Companies

Configuring companies is one of two independent ways to group vehicles in a fleet report (the other is by site). To add, edit or delete companies, choose “Companies” from the “View, edit, report” menu:



## 4.3 Sites

To add, edit or delete sites, choose “Sites” from the “View, edit, report” menu:





---

## 4.4 Brake test calculations

There exists a myriad of disparate brake test regulations in Australia, particularly in the mining and heavy machinery industries. The brake test calculations in **NetBrake** attempt to make it easier to determine and report on pass/fail criteria for a fleet of vehicles. There are several brake test standards available by default:

AS2958.1 Earth-moving machinery – safety. This standard includes brake test calculation requirements for the primary and secondary brake systems, for vehicle masses above and below 32000kg, for vehicles intended or not intended for travel on public roads, and for vehicles that are or are not classed with rigid frame / articulated steer dumpers.

AS2359.13 Powered industrial trucks. This standard provides service brake test calculation requirements for truck types A (industrial trucks), B (industrial tractors), C (stacking lift trucks with operating position elevating in association with the load-lifting device, lateral-stacking lift trucks, lateral- and front-stacking lift trucks, order-picking trucks), and D (rough-terrain trucks).

RTA Rule 101. This rule is the NSW state law for public road vehicles, and it applies to service and emergency brakes, for vehicle masses above and below 3000kg.

Australian Vehicle Standards Rule, Rule 128. This rule is the Northern Territory law for public road vehicles, and it applies to service and emergency brakes, for vehicle masses above and below 3000kg.

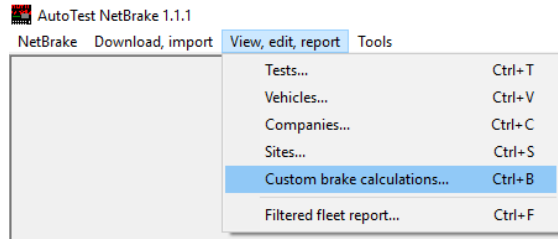
Queensland Transport - Roadworthy regulations. This rule is the QLD state law for public road vehicles, and it applies to service and emergency brakes, for vehicle masses above and below 3000kg.

VicRoads Safety Regulation. This rule is the VIC state law for public road vehicles, and it applies to service and emergency brakes, for vehicle masses above and below 3000kg.

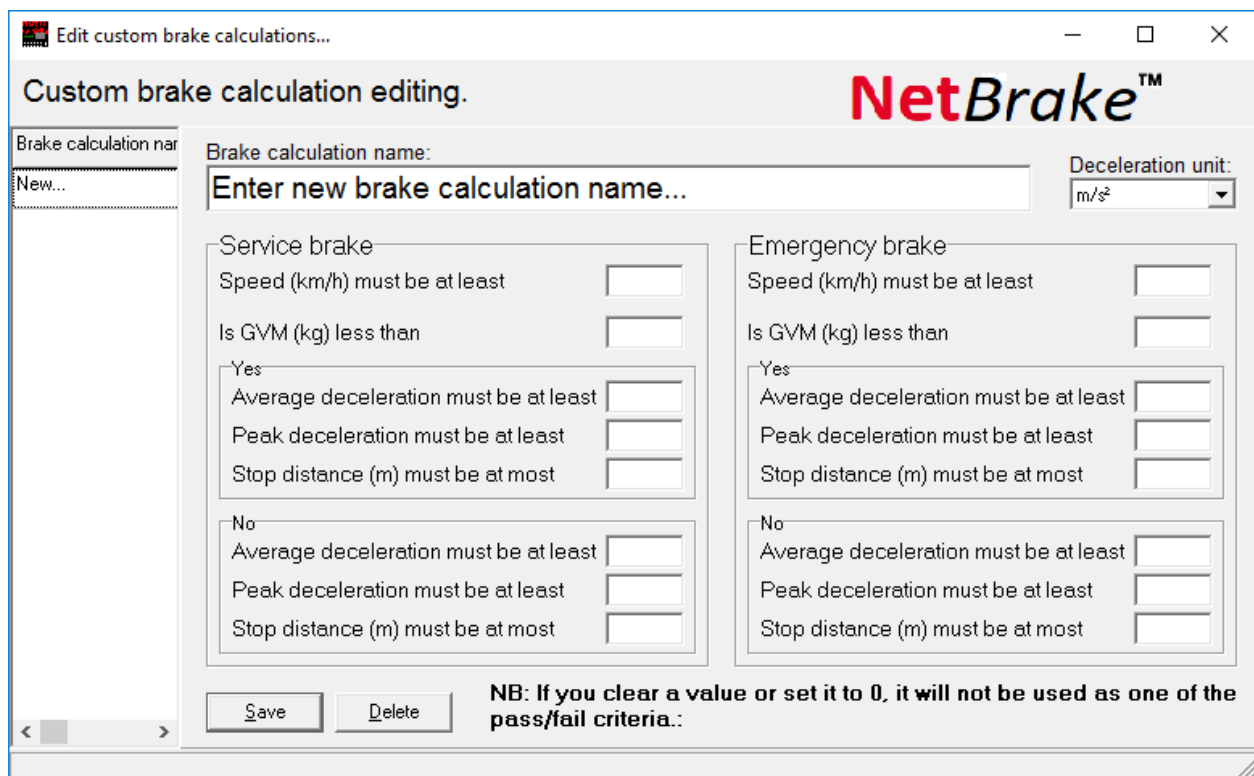
Heavy Vehicle Inspection Manual. This rule is the TAS state law for public road vehicles, and it applies to service and emergency brakes, for vehicle masses above 4500kg.

## 4.5 Custom brake test calculations

The default brake test calculations may not be appropriate for all fleets. It is possible to create a custom set of brake calculations to suit. To create, edit or delete brake calculations, choose “Custom brake calculations...” from the “View, edit, report” menu:



This will display the Edit custom brake calculation window:



**Deceleration unit.** AutoStop Heavy brake testers are able to store average and peak deceleration in one of three units. Choose a preferred unit of measure here, and all deceleration values will be displayed in this unit for all vehicles associated with this brake calculation.

**Speed (km/h) must be at least.** Enter a value indicating the minimum speed the vehicle decelerated from. If the test reports a speed lower than this value, the test fails.

---

Is GVM (kg) less than. All state laws have different requirements for vehicles of different mass. This value must be entered for all custom brake calculations. If the vehicle GVM is less than this value, then the values in the “Yes” box will be used, otherwise the values in the “No” box are used.

Average deceleration must be at least. This will be the minimum average deceleration; tests with lower average deceleration will fail. NB: unit for this value depends on the Deceleration unit field above.

Peak deceleration must be at least. This will be the minimum peak deceleration; tests with lower peak deceleration will fail. NB: unit for this value depends on the Deceleration unit field above.

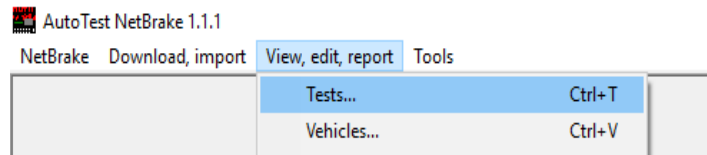
Stop distance (m) must be at most. This will be the maximum stopping distance; tests with greater stopping distance will fail. NB: unit is metres.

---

## 5. Reporting

### 5.1 Test reports

Test reports are available by selecting “Tests” from the “View, edit, report” menu.



Find the test you wish to report on, and press “Report”. This report displays detailed information from the test results, including a graph showing deceleration, and load cell force. Note that load cell force data is only available for service brake tests.

It is also possible to view the test report for a vehicle’s latest test from the Vehicle Edit window.

### 5.2 Vehicle reports

Vehicle reports are available by selecting “Vehicles” from the “View, edit, report” menu.

The vehicle report shows all details associated with the vehicle, followed by a list of all tests performed on this vehicle, ordered by test date. A column indicates whether the test passed or failed, but detailed information on the brake pass/fail calculation is not available.

For more detail, a test report must be used.

### 5.3 Company and site reports

Company and site reports are available from the Edit Company and Edit Site windows, respectively.

These reports show every vehicle in the company or site, along with results of the last test performed for each vehicle, and an indication for when each vehicle is due to be retested.

This report indicates whether the test passed or failed, but detailed information on the brake pass/fail calculation is not available. For more detail, a test report must be used.

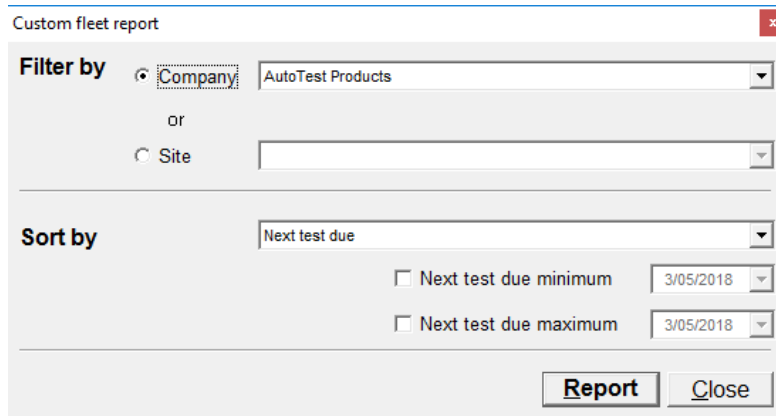
### 5.4 Filtered fleet reports.

---

A filtered fleet report is the same as a company or site report, except that sorting by last test date or next test due is available, and minimum/maximum values for these dates can be specified.

Using these filters, it is possible to create reports for:

- vehicles in a fleet that are overdue or are soon to be overdue for brake testing,
- vehicles that have been tested today / this week / etc,
- vehicles that are not overdue for testing.



Custom fleet report

Filter by  Company: AutoTest Products

or  Site

Sort by: Next test due

Next test due minimum 3/05/2018

Next test due maximum 3/05/2018

Report Close

This report can thus be used for invoicing purposes, or for organising a day or week's activity.

## 6. Troubleshooting and contact details

AutoTest Products operates from Melbourne, Australia, and has a dedicated team of sales, development and support staff to assist with queries or troubleshooting.

Sales: [sales@autotest.net.au](mailto:sales@autotest.net.au)  
Technical support: [tech.support@autotest.net.au](mailto:tech.support@autotest.net.au)

---

**NOTES:**

---

Copyright 2022 AutoTest Products Pty Ltd ABN 47 005 712 005.

® denotes a trademark owned by AutoTest Products Pty Ltd ABN 47 005 712 005.



## **AUTOTEST** Products Pty Ltd

69 Parsons St Kensington VIC 3031 Australia

Phone: (+61 3) 8840 3000

Service: (+61 3) 8840 3016    [service@autotest.net.au](mailto:service@autotest.net.au)

Sales: (+61 3) 8840 3017    [sales@autotest.net.au](mailto:sales@autotest.net.au)

[www.autotest.net.au](http://www.autotest.net.au)